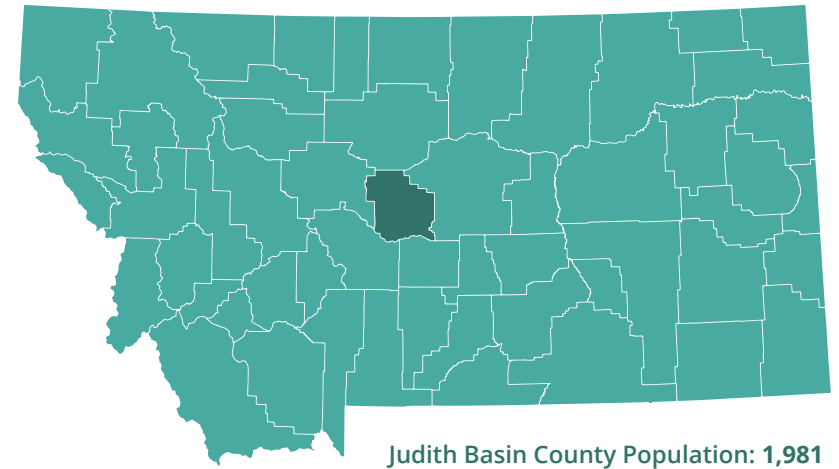
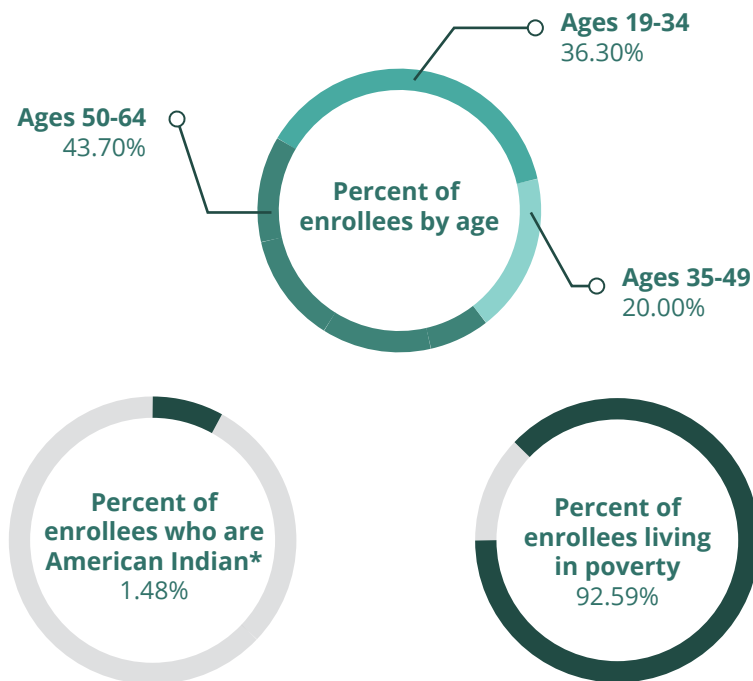


Medicaid Expansion Overview Judith Basin County

Ensuring Montana citizens have affordable, accessible health care is critical to our state's economy. When individuals, especially those with low-incomes, can get the health care they need, they can better afford basic necessities, build job skills and find work, and have an improved quality of life. In 2015, Montana passed the bipartisan HELP Act providing those with incomes below 138% of the federal poverty line (for a single individual with annual income below \$16,750) access to Medicaid in Montana. Since 2015, over 96,000 Montanans have gained access to health coverage, and we have experienced state savings and significant economic impact in local communities.

135 Judith Basin County residents are enrolled in Medicaid expansion

Judith Basin County has benefited from Medicaid Expansion



Statewide Impact of Medicaid Expansion

Over **96,000** Montanans enrolled
300,000 preventative services provided
\$58 million savings to the state general fund
\$1.3 billion in federal dollars injected into the state

*All services accessed through IHS/tribal health facilities and coordinated care providers are paid by the federal government at 100 percent of the billed cost with no fiscal impact to the state.

Sources: Montana Department of Health and Human Services and University of Montana Bureau of Business and Economic Research.